

Sweet Mother Program Activity Report 2



It is a great pleasure to inform you that Sweet Mother Program has expanded from health centers to the community!!!

It was observed that malnutrition is common among children in our target communities. Hence Nurture project a nutrition component of Sweet Mother Program was designed to meet this need. Each child was tested for malnutrition using MUAC tape, BMI, edema, wasting test, etc.

Your donations helped Sweet Mother Program- Nurture projects to reach **128** children in **1** community.

95% are malnourished and about **5%** are severely acute malnourished only **2** children were well nourished.

Also, **331** pregnant and nursing mothers in **11** community health centers, **45** Traditional Birth Attendance, Birthing kits, Vitamin A, Multivitamin, Albendazole were distributed.

More cases of only our birthing kits used for delivery occurred.

Thanks to your generous donations that made it happen!

Your continued donation will assist Sweet Mother Program – Nurture Project to reach more communities.

Dashboard Sweet Mother Program Activities

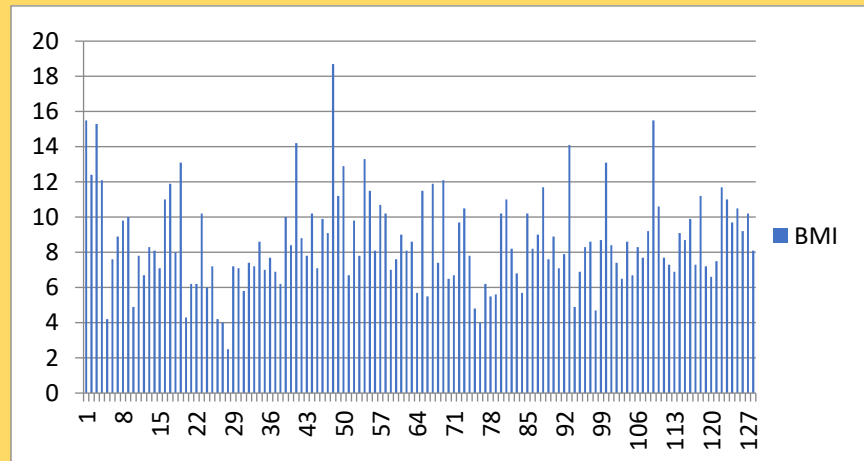
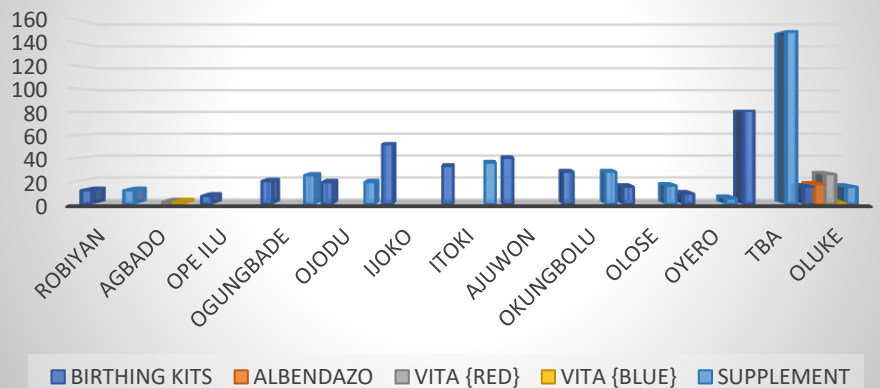


Figure 1 Graph of BMI of the children

Bar Chart of Birthing Kits and Micronutrients Given



Report written By Folasade Ofurune
Executive Director, Health Education and Empowerment Initiative (HEDEN) and Project Leader, Sweet Mother Program

Please Share This Report with Others for Them to See What Your Donations Achieved. Thank You